

REVISED  
6/1/18

WASHOE COUNTY HUMAN SERVICES AGENCY  
Amber Howell 855\*  
Director  
CHILDREN'S SERVICES DIVISION

Community Engagement  
Community Outreach Coordinator  
Chris Cario 1043  
Statistician  
Josh Noble 9277

Children's Services  
Alice Lebecma 4857  
Division Director  
Initiatives & Implementation

Administrative Secretary  
Supervisor  
Diane Maddole 1034

File Room Clerical Support  
Kelly Parsons 1001  
Helena Williams 4868

Children Services  
Ryan Gustafson 984  
Division Director

Stacey Lance 1033  
Coordinator  
Foster Care/Adoption

Shannon McCoy 1054  
Coordinator  
Permanency

Denia Carritore 1057 (644)  
Jim Durand 1057 (615)  
Coordinator  
Training/QI

John Bryant 1058  
Coordinator  
Clinical Services/Intake

Sherri Cline 1055  
Coordinator  
Assessment

John Bryant 1058  
Coordinator  
Clinical Services/Intake

John Bryant 1058  
Coordinator  
Clinical Services/Intake

John Bryant 1058  
Coordinator  
Clinical Services/Intake

John Bryant 1058  
Coordinator  
Clinical Services/Intake

Assessment Unit 1  
Human Services Supervisor  
Alicia Kraft 885  
Assessment Staff  
Lindsarae Klies 1087  
Sandra Espino 1113  
Cheryl Sluis-Moreno 1110  
HSSS  
Christina Segura 5847

Swing Shift 1  
(Sunday - Wednesday)  
Human Services Supervisor  
Janet Higgins 990  
Staff  
Erika Meszaros 1087  
Reanna Rettereth 1102  
Jayme Kenneson 1088  
Placement Services & Support  
Social Worker III

Intake  
Human Services Supervisor  
Kristin Monibi 892  
Screeners  
Diana Mann 1082  
Linda Brouker 1084  
Michelle Phillips 6581  
Michele DiChiara 1081  
Ruben Garcia (61) 8679  
Laura Calvo 1132

Diligent Search  
Program Assistant  
Office Support Specialist  
Diligent Search  
Gina Hincley 1090  
HSSSI  
Michelle Saldate 1046  
Michelle Gazaway 1050

Training & Development Unit  
Assessment  
Human Services Supervisor  
Denise Tyre 886  
Human Services Case Workers  
HSSS  
Pama Gillam 5848  
Senior Human Services  
Case Worker  
Ryan Williamson 1115  
Trainees  
Diana Flores 4843  
Patricia Keeler-Cobb 1094 (6121)  
Trainees  
Hedi Miers (61) 1075 (6121)  
Kayla Armbruster 1105 (521)  
Permanency  
Human Services Supervisor  
Amy Sandvik 4847  
Senior Human Services  
Case Worker  
Kasey Pomerleau 1078  
Trainees  
Chiara Kitchell 1096

FC Clerical Support  
Office Support Specialist  
Anne Dahms 1022  
Amy Nichols 9330  
Office Assistant II  
Irene Habacon 1017  
Dina Orellana 1012  
Dayna Berry 1022  
Vanessa Pavla 1013

Adoption Unit  
Human Services  
Supervisor  
Subsidy Negotiator  
Senior Human Services  
Sr. Case Manager  
Mary Encarnacion 1128  
Emily Smith 6627  
Human Services  
Case Managers  
Kristi Sprinkle 1131  
Jessie Cohen 4864  
Michelle Rosencrantz 1118  
Lisa Nielson 1138  
Ron Branson 9270  
Mitch Mathews (perm) 9270  
Office Support Specialist  
Casey Berry 1016  
Heather Felding 10100 (61) 5718

Child Care Licensing and  
Foster Care Support  
Human Services Supervisor  
Jesse Brown 986 (911)  
K.K. Libson  
Victoria Bowers 53 5875  
Childcare Licensing  
Elise Henriquez 1008  
Jamie Taylor 1009  
Karen Middleton 1006  
ICFC Libson  
Norm Enlow 6626

FC Recruitment, Training and  
Placement Support  
Human Services Supervisor  
Mikie Franklin 998  
Human Services Case Workers  
Heather Wenker 6568  
Cindy Adams 1127  
Tawnya Robertson 1135  
Carmen Silva 1129  
Placement Support  
Kin Minor (61) 1076  
Bridges Out of Poverty  
Matt Polley 631100

FC Licensing/Investigations  
Human Services Supervisor  
Tara Goodsell 994  
Human Services Case Workers  
Pierre Marche 1082  
Codi Soap 6625  
Barbara Jaime 1070  
Katie Bennett 1136  
Jessica Frank 1134  
Relative Libson  
Ana Bassett 1071

Permanency Unit 1  
Human Services Supervisor  
Tara Sterrett 9267  
Staff  
Debbie Jackins 1091  
Denise Salla 1112  
Alle Blum 1106  
Anastasia Cooper 4055  
HSSS  
Kasey LaFoon 1051

Permanency Unit 2  
Human Services Supervisor  
Rocio Lopez 9288  
Staff  
Katie Proctor 1114  
Brisa Aguilar (61) 6570  
Cecilia Gonzalez 9273  
Whitney Vasquez 9274  
Brenda Serafini 1089

Permanency Unit 3  
Human Services Supervisor  
Steve Canale 995  
Staff  
Alaine Thomas 1090  
Sierra Finck 4859  
Rachael McGarrath 1103  
Jolene Dille (61) 6565  
HSSS  
Cynthia Day 1052

Permanency Unit 4  
Human Services Supervisor  
Melissa Coates 993  
Staff  
Jacqueline Early 6563  
Brenda Sillis-Gutierrez 1084  
Jennifer McKeiran 1085  
Rebecca Lopez 6569

Permanency Unit 5  
Human Services Supervisor  
Julia Nesser 9266  
Staff  
Jennifer Kelly 1108  
Josh Cruz 1104  
Cynthia Heidenbrand 9269  
Alexandra Clark 4858

Human Services Supervisor  
Katie Schwinz 9711  
Assessment Staff  
Andrea Mendenhall 1086  
Christy Pratt 4861  
Nancy Quintero (61) 1116 (6711)

Human Services Supervisor  
Jennifer Basscom 6931  
Assessment Staff  
Jon Haley 1081  
Jessica Perez 9271  
Laura Caprioli 5867

Human Services Supervisor  
Case Worker III  
Rosie Basterchea 1077  
Caroline Thomas 20 7851  
Cynthia Willis 20 7852

Human Services Supervisor  
Case Worker  
Jeri Starkey (61) 999

Advanced Practice Nurse  
Becky Gebhardt (61) 1056  
Christina Sheppard 2115  
HSSS  
Jeri Starkey (61) 999

Medical  
Advanced Practice Nurse  
Becky Gebhardt (61) 1056  
Christina Sheppard 2115  
HSSS  
Jeri Starkey (61) 999

Facilitators  
Human Services  
Case Worker III  
Rosie Basterchea 1077  
Caroline Thomas 20 7851  
Cynthia Willis 20 7852

Child Advocacy Center  
Human Services Supervisor  
Staff  
Tammie Williamson 997

Human Services Supervisor  
Case Worker  
Kassi Morris 1079  
Terra Luck 1125  
Kylee Spring 4862  
Mercedes Solbeau 6567  
Darcy Chappel 9538 (6711)

Quality Improvement  
Case Compliance Reviewer  
Samantha Sevick 1065 (6720)  
Amber Cummins 9365  
Social Services Program  
Specialist  
Kim Martin 9278  
Management Analyst  
Bojana Vujeva 9279  
Office Support Specialist  
Vallin Barry 1024

Contract Oversight  
Independent Living  
Differential Response  
Safety Services

Visitation Center  
Program Coordinator  
Clerical Staff  
Rebecca Carter-Steele (61) 9875  
Program Assistant  
Alisa Newlon 1048  
OAI  
Leona Lopez 9275  
Human Services  
Case Worker  
Betty Sharkey 1083  
Sr. HSSS  
Raymond Wiedefeld (61) 1041  
HSSS Staff  
Scheduler  
Mayra Quiroz 5851  
Tanya Defehr 5849  
Runner Staff  
Kevin Page 1028  
OSS Lead  
Melissa Hansen 944  
Runners  
Tim Hurst 1021  
Lauren Mible 1010  
Nelida Estrada 941  
Ashley Quintero 6635  
Lisa Wilson 1003  
Tina Hayes 1002  
Kayleen Taylor 5856

Program Coordinator  
Alisa Newlon 1048  
OAI  
Leona Lopez 9275  
Human Services  
Case Worker  
Betty Sharkey 1083  
Sr. HSSS  
Raymond Wiedefeld (61) 1041  
HSSS Staff  
Scheduler  
Mayra Quiroz 5851  
Tanya Defehr 5849  
Runner Staff  
Kevin Page 1028  
OSS Lead  
Melissa Hansen 944  
Runners  
Tim Hurst 1021  
Lauren Mible 1010  
Nelida Estrada 941  
Ashley Quintero 6635  
Lisa Wilson 1003  
Tina Hayes 1002  
Kayleen Taylor 5856

Human Services Supervisor  
Case Workers  
Tara Goodsell 994  
Pierre Marche 1082  
Codi Soap 6625  
Barbara Jaime 1070  
Katie Bennett 1136  
Jessica Frank 1134  
Relative Libson  
Ana Bassett 1071

Human Services Supervisor  
Case Workers  
Tara Goodsell 994  
Pierre Marche 1082  
Codi Soap 6625  
Barbara Jaime 1070  
Katie Bennett 1136  
Jessica Frank 1134  
Relative Libson  
Ana Bassett 1071

Human Services Supervisor  
Case Workers  
Tara Goodsell 994  
Pierre Marche 1082  
Codi Soap 6625  
Barbara Jaime 1070  
Katie Bennett 1136  
Jessica Frank 1134  
Relative Libson  
Ana Bassett 1071

Human Services Supervisor  
Case Workers  
Tara Goodsell 994  
Pierre Marche 1082  
Codi Soap 6625  
Barbara Jaime 1070  
Katie Bennett 1136  
Jessica Frank 1134  
Relative Libson  
Ana Bassett 1071

Human Services Supervisor  
Case Workers  
Tara Goodsell 994  
Pierre Marche 1082  
Codi Soap 6625  
Barbara Jaime 1070  
Katie Bennett 1136  
Jessica Frank 1134  
Relative Libson  
Ana Bassett 1071

Human Services Supervisor  
Case Workers  
Tara Goodsell 994  
Pierre Marche 1082  
Codi Soap 6625  
Barbara Jaime 1070  
Katie Bennett 1136  
Jessica Frank 1134  
Relative Libson  
Ana Bassett 1071

Human Services Supervisor  
Case Workers  
Tara Goodsell 994  
Pierre Marche 1082  
Codi Soap 6625  
Barbara Jaime 1070  
Katie Bennett 1136  
Jessica Frank 1134  
Relative Libson  
Ana Bassett 1071

Human Services Supervisor  
Case Workers  
Tara Goodsell 994  
Pierre Marche 1082  
Codi Soap 6625  
Barbara Jaime 1070  
Katie Bennett 1136  
Jessica Frank 1134  
Relative Libson  
Ana Bassett 1071

Human Services Supervisor  
Case Workers  
Tara Goodsell 994  
Pierre Marche 1082  
Codi Soap 6625  
Barbara Jaime 1070  
Katie Bennett 1136  
Jessica Frank 1134  
Relative Libson  
Ana Bassett 1071

Human Services Supervisor  
Case Workers  
Tara Goodsell 994  
Pierre Marche 1082  
Codi Soap 6625  
Barbara Jaime 1070  
Katie Bennett 1136  
Jessica Frank 1134  
Relative Libson  
Ana Bassett 1071

Human Services Supervisor  
Case Workers  
Tara Goodsell 994  
Pierre Marche 1082  
Codi Soap 6625  
Barbara Jaime 1070  
Katie Bennett 1136  
Jessica Frank 1134  
Relative Libson  
Ana Bassett 1071

Human Services Supervisor  
Case Workers  
Tara Goodsell 994  
Pierre Marche 1082  
Codi Soap 6625  
Barbara Jaime 1070  
Katie Bennett 1136  
Jessica Frank 1134  
Relative Libson  
Ana Bassett 1071

Human Services Supervisor  
Case Workers  
Tara Goodsell 994  
Pierre Marche 1082  
Codi Soap 6625  
Barbara Jaime 1070  
Katie Bennett 1136  
Jessica Frank 1134  
Relative Libson  
Ana Bassett 1071

Human Services Supervisor  
Case Workers  
Tara Goodsell 994  
Pierre Marche 1082  
Codi Soap 6625  
Barbara Jaime 1070  
Katie Bennett 1136  
Jessica Frank 1134  
Relative Libson  
Ana Bassett 1071

Human Services Supervisor  
Case Workers  
Tara Goodsell 994  
Pierre Marche 1082  
Codi Soap 6625  
Barbara Jaime 1070  
Katie Bennett 1136  
Jessica Frank 1134  
Relative Libson  
Ana Bassett 1071

Human Services Supervisor  
Case Workers  
Tara Goodsell 994  
Pierre Marche 1082  
Codi Soap 6625  
Barbara Jaime 1070  
Katie Bennett 1136  
Jessica Frank 1134  
Relative Libson  
Ana Bassett 1071

Human Services Supervisor  
Case Workers  
Tara Goodsell 994  
Pierre Marche 1082  
Codi Soap 6625  
Barbara Jaime 1070  
Katie Bennett 1136  
Jessica Frank 1134  
Relative Libson  
Ana Bassett 1071

Human Services Supervisor  
Case Workers  
Tara Goodsell 994  
Pierre Marche 1082  
Codi Soap 6625  
Barbara Jaime 1070  
Katie Bennett 1136  
Jessica Frank 1134  
Relative Libson  
Ana Bassett 1071

Human Services Supervisor  
Case Workers  
Tara Goodsell 994  
Pierre Marche 1082  
Codi Soap 6625  
Barbara Jaime 1070  
Katie Bennett 1136  
Jessica Frank 1134  
Relative Libson  
Ana Bassett 1071

Human Services Supervisor  
Case Workers  
Tara Goodsell 994  
Pierre Marche 1082  
Codi Soap 6625  
Barbara Jaime 1070  
Katie Bennett 1136  
Jessica Frank 1134  
Relative Libson  
Ana Bassett 1071

Human Services Supervisor  
Case Workers  
Tara Goodsell 994  
Pierre Marche 1082  
Codi Soap 6625  
Barbara Jaime 1070  
Katie Bennett 1136  
Jessica Frank 1134  
Relative Libson  
Ana Bassett 1071

Human Services Supervisor  
Case Workers  
Tara Goodsell 994  
Pierre Marche 1082  
Codi Soap 6625  
Barbara Jaime 1070  
Katie Bennett 1136  
Jessica Frank 1134  
Relative Libson  
Ana Bassett 1071

Human Services Supervisor  
Case Workers  
Tara Goodsell 994  
Pierre Marche 1082  
Codi Soap 6625  
Barbara Jaime 1070  
Katie Bennett 1136  
Jessica Frank 1134  
Relative Libson  
Ana Bassett 1071

Human Services Supervisor  
Case Workers  
Tara Goodsell 994  
Pierre Marche 1082  
Codi Soap 6625  
Barbara Jaime 1070  
Katie Bennett 1136  
Jessica Frank 1134  
Relative Libson  
Ana Bassett 1071

Human Services Supervisor  
Case Workers  
Tara Goodsell 994  
Pierre Marche 1082  
Codi Soap 6625  
Barbara Jaime 1070  
Katie Bennett 1136  
Jessica Frank 1134  
Relative Libson  
Ana Bassett 1071

Human Services Supervisor  
Case Workers  
Tara Goodsell 994  
Pierre Marche 1082  
Codi Soap 6625  
Barbara Jaime 1070  
Katie Bennett 1136  
Jessica Frank 1134  
Relative Libson  
Ana Bassett 1071

Human Services Supervisor  
Case Workers  
Tara Goodsell 994  
Pierre Marche 1082  
Codi Soap 6625  
Barbara Jaime 1070  
Katie Bennett 1136  
Jessica Frank 1134  
Relative Libson  
Ana Bassett 1071

Human Services Supervisor  
Case Workers  
Tara Goodsell 994  
Pierre Marche 1082  
Codi Soap 6625  
Barbara Jaime 1070  
Katie Bennett 1136  
Jessica Frank 1134  
Relative Libson  
Ana Bassett 1071

Human Services Supervisor  
Case Workers  
Tara Goodsell 994  
Pierre Marche 1082  
Codi Soap 6625  
Barbara Jaime 1070  
Katie Bennett 1136  
Jessica Frank 1134  
Relative Libson  
Ana Bassett 1071

Human Services Supervisor  
Case Workers  
Tara Goodsell 994  
Pierre Marche 1082  
Codi Soap 6625  
Barbara Jaime 1070  
Katie Bennett 1136  
Jessica Frank 1134  
Relative Libson  
Ana Bassett 1071

Human Services Supervisor  
Case Workers  
Tara Goodsell 994  
Pierre Marche 1082  
Codi Soap 6625  
Barbara Jaime 1070  
Katie Bennett 1136  
Jessica Frank 1134  
Relative Libson  
Ana Bassett 1071

Human Services Supervisor  
Case Workers  
Tara Goodsell 994  
Pierre Marche 1082  
Codi Soap 6625  
Barbara Jaime 1070  
Katie Bennett 1136  
Jessica Frank 1134  
Relative Libson  
Ana Bassett 1071

Human Services Supervisor  
Case Workers  
Tara Goodsell 994  
Pierre Marche 1082  
Codi Soap 6625  
Barbara Jaime 1070  
Katie Bennett 1136  
Jessica Frank 1134  
Relative Libson  
Ana Bassett 1071

Human Services Supervisor  
Case Workers  
Tara Goodsell 994  
Pierre Marche 1082  
Codi Soap 6625  
Barbara Jaime 1070  
Katie Bennett 1136  
Jessica Frank 1134  
Relative Libson  
Ana Bassett 1071

Human Services Supervisor  
Case Workers  
Tara Goodsell 994  
Pierre Marche 1082  
Codi Soap 6625  
Barbara Jaime 1070  
Katie Bennett 1136  
Jessica Frank 1134  
Relative Libson  
Ana Bassett 1071

Human Services Supervisor  
Case Workers  
Tara Goodsell 994  
Pierre Marche 1082  
Codi Soap 6625  
Barbara Jaime 1070  
Katie Bennett 1136  
Jessica Frank 1134  
Relative Libson  
Ana Bassett 1071

Human Services Supervisor  
Case Workers  
Tara Goodsell 994  
Pierre Marche 1082  
Codi Soap 6625  
Barbara Jaime 1070  
Katie Bennett 1136  
Jessica Frank 1134  
Relative Libson  
Ana Bassett 1071

Human Services Supervisor  
Case Workers  
Tara Goodsell 994  
Pierre Marche 1082  
Codi Soap 6625  
Barbara Jaime 1070  
Katie Bennett 1136  
Jessica Frank 1134  
Relative Libson  
Ana Bassett 1071

Human Services Supervisor  
Case Workers  
Tara Goodsell 994  
Pierre Marche 1082  
Codi Soap 6625  
Barbara Jaime 1070  
Katie Bennett 1136  
Jessica Frank 1134  
Relative Libson  
Ana Bassett 1071

Human Services Supervisor  
Case Workers  
Tara Goodsell 994  
Pierre Marche 1082  
Codi Soap 6625  
Barbara Jaime 1070  
Katie Bennett 1136  
Jessica Frank 1134  
Relative Libson  
Ana Bassett 1071

Human Services Supervisor  
Case Workers  
Tara Goodsell 994  
Pierre Marche 1082  
Codi Soap 6625  
Barbara Jaime 1070  
Katie Bennett 1136  
Jessica Frank 1134  
Relative Libson  
Ana Bassett 1071

Human Services Supervisor  
Case Workers  
Tara Goodsell 994  
Pierre Marche 1082  
Codi Soap 6625  
Barbara Jaime 1070  
Katie Bennett 1136  
Jessica Frank 1134  
Relative Libson  
Ana Bassett 1071

Human Services Supervisor  
Case Workers  
Tara Goodsell 994  
Pierre Marche 1082  
Codi Soap 6625  
Barbara Jaime 1070  
Katie Bennett 1136  
Jessica Frank 1134  
Relative Libson  
Ana Bassett 1071

Human Services Supervisor  
Case Workers  
Tara Goodsell 994  
Pierre Marche 1082  
Codi Soap 6625  
Barbara Jaime 1070  
Katie Bennett 1136  
Jessica Frank 1134  
Relative Libson  
Ana Bassett 1071

Human Services Supervisor  
Case Workers  
Tara Goodsell 994  
Pierre Marche 1082  
Codi Soap 6625  
Barbara Jaime 1070  
Katie Bennett 1136  
Jessica Frank 1134  
Relative Libson  
Ana Bassett 1071

Human Services Supervisor  
Case Workers  
Tara Goodsell 994  
Pierre Marche 1082  
Codi Soap 6625  
Barbara Jaime 1070  
Katie Bennett 1136  
Jessica Frank 1134  
Relative Libson  
Ana Bassett 1071

Human Services Supervisor  
Case Workers  
Tara Goodsell 994  
Pierre Marche 1082  
Codi Soap 6625  
Barbara Jaime 1070  
Katie Bennett 1136  
Jessica Frank 1134  
Relative Libson  
Ana Bassett 1071

Human Services Supervisor  
Case Workers  
Tara Goodsell 994  
Pierre Marche 1082  
Codi Soap 6625  
Barbara Jaime 1070  
Katie Bennett 1136  
Jessica Frank 1134  
Relative Libson  
Ana Bassett 1071

Human Services Supervisor  
Case Workers  
Tara Goodsell 994  
Pierre Marche 1082  
Codi Soap 6625  
Barbara Jaime 1070  
Katie Bennett 1136  
Jessica Frank 1134  
Relative Libson  
Ana Bassett 1071

Human Services Supervisor  
Case Workers  
Tara Goodsell 994  
Pierre Marche 1082  
Codi Soap 6625  
Barbara Jaime 1070  
Katie Bennett 1136  
Jessica Frank 1134  
Relative Libson  
Ana Bassett 1071

Human Services Supervisor  
Case Workers  
Tara Goodsell 994  
Pierre Marche 1082  
Codi Soap 6625  
Barbara Jaime 1070  
Katie Bennett 1136  
Jessica Frank 1134  
Relative Libson  
Ana Bassett 1071

Human Services Supervisor  
Case Workers  
Tara Goodsell 994  
Pierre Marche 1082  
Codi Soap 6625  
Barbara Jaime 1070  
Katie Bennett 1136  
Jessica Frank 1134  
Relative Libson  
Ana Bassett 1071

Human Services Supervisor  
Case Workers  
Tara Goodsell 994  
Pierre Marche 1082  
Codi Soap 6625  
Barbara Jaime 1070  
Katie Bennett 1136  
Jessica Frank 1134  
Relative Libson  
Ana Bassett 1071

Human Services Supervisor  
Case Workers  
Tara Goodsell 994  
Pierre Marche 1082  
Codi Soap 6625  
Barbara Jaime 1070  
Katie Bennett 1136  
Jessica Frank 1134  
Relative Libson  
Ana Bassett 1071

Human Services Supervisor  
Case Workers  
Tara Goodsell 994  
Pierre Marche 1082  
Codi Soap 6625  
Barbara Jaime 1070  
Katie Bennett 1136  
Jessica Frank 1134  
Relative Libson  
Ana Bassett 1071

Human Services Supervisor  
Case Workers  
Tara Goodsell 994  
Pierre Marche 1082  
Codi Soap 6625  
Barbara Jaime 1070  
Katie Bennett 1136  
Jessica Frank 1134  
Relative Libson  
Ana Bassett 1071

Human Services Supervisor  
Case Workers  
Tara Goodsell 994  
Pierre Marche 1082  
Codi Soap 6625  
Barbara Jaime 1070  
Katie Bennett 1136  
Jessica Frank 1134  
Relative Libson  
Ana Bassett 1071

Human Services Supervisor  
Case Workers  
Tara Goodsell 994  
Pierre Marche 1082  
Codi Soap 6625  
Barbara Jaime 1070  
Katie Bennett 1136  
Jessica Frank 1134  
Relative Libson  
Ana Bassett 1071

Human Services Supervisor  
Case Workers  
Tara Goodsell 994  
Pierre Marche 1082  
Codi Soap 6625  
Barbara Jaime 1070  
Katie Bennett 1136  
Jessica Frank 1134  
Relative Libson  
Ana Bassett 1071

Human Services Supervisor  
Case Workers  
Tara Goodsell 994  
Pierre Marche 1082  
Codi Soap 6625  
Barbara Jaime 1070  
Katie Bennett 1136  
Jessica Frank 1134  
Relative Libson  
Ana Bassett 1071

Human Services Supervisor  
Case Workers  
Tara Goodsell 994  
Pierre Marche 1082  
Codi Soap 6625  
Barbara Jaime 1070  
Katie Bennett 1136  
Jessica Frank 1134  
Relative Libson  
Ana Bassett 1071

Human Services Supervisor  
Case Workers  
Tara Goodsell 994  
Pierre Marche 1082  
Codi Soap 6625  
Barbara Jaime 1070  
Katie Bennett 1136  
Jessica Frank 1134  
Relative Libson  
Ana Bassett 1071

Human Services Supervisor  
Case Workers  
Tara Goodsell 994  
Pierre Marche 1082  
Codi Soap 6625  
Barbara Jaime 1070  
Katie Bennett 1136  
Jessica Frank 1134  
Relative Libson  
Ana Bassett 1071

Human Services Supervisor  
Case Workers  
Tara Goodsell 994  
Pierre Marche 1082  
Codi Soap 6625  
Barbara Jaime 1070  
Katie Bennett 1136  
Jessica Frank 1134  
Relative Libson  
Ana Bassett 1071

Human Services Supervisor  
Case Workers  
Tara Goodsell 994  
Pierre Marche 1082  
Codi Soap 6625  
Barbara Jaime 1070  
Katie Bennett 1136  
Jessica Frank 1134  
Relative Libson  
Ana Bassett 1071

Human Services Supervisor  
Case Workers  
Tara Goodsell 994  
Pierre Marche 1082  
Codi Soap 6625  
Barbara Jaime 1070  
Katie Bennett 1136  
Jessica Frank 1134  
Relative Libson  
Ana Bassett 1071

Human Services Supervisor  
Case Workers  
Tara Goodsell 994  
Pierre Marche 1082  
Codi Soap 6625  
Barbara Jaime 1070  
Katie Bennett 1136  
Jessica Frank 1134  
Relative Libson  
Ana Bassett 1071

Human Services Supervisor  
Case Workers  
Tara Goodsell 994  
Pierre Marche 1082  
Codi Soap 6625  
Barbara Jaime 1070  
Katie Bennett 1136  
Jessica Frank 1134  
Relative Libson  
Ana Bassett 1071

Human Services Supervisor  
Case Workers  
Tara Goodsell 994  
Pierre Marche 1082  
Codi Soap 6625  
Barbara Jaime 1070  
Katie Bennett 1136  
Jessica Frank 1134  
Relative Libson  
Ana Bassett 1071

Human Services Supervisor  
Case Workers  
Tara Goodsell 994  
Pierre Marche 1082  
Codi Soap 6625  
Barbara Jaime 1070  
Katie Bennett 1136  
Jessica Frank 1134  
Relative Libson  
Ana Bassett 1071

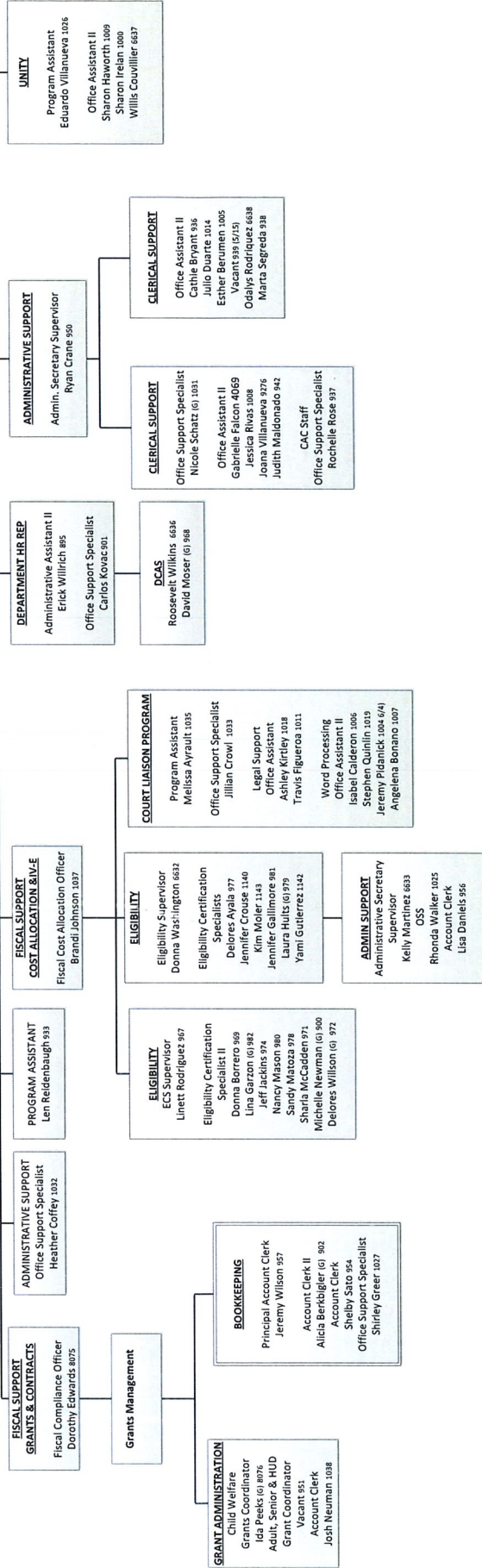
Human Services Supervisor  
Case Workers  
Tara Goodsell 994  
Pierre Marche 1082  
Codi Soap 6625  
Barbara Jaime 1070  
Katie Bennett 1136  
Jessica Frank 1134  
Relative Libson  
Ana Bassett 1071

Human Services Supervisor  
Case Workers  
Tara Goodsell 994  
Pierre Marche 1

**WASHOE COUNTY DEPARTMENT OF SOCIAL SERVICES**  
 Director  
 Amber Howell 935

**ADMINISTRATIVE SERVICES**  
 Division Director Finance & Administration  
 Leslie Williams 1060

REVISED  
 6/1/18



UPDATED  
6/7/18

WASHOE COUNTY DEPARTMENT OF SOCIAL SERVICES  
ADMINISTRATIVE DIVISION  
Director - Amber Howell 935

ADULT & SENIOR SERVICES  
Steve McBride 983  
Division Director

